

THE FUTURE OF HOUSING

For better communities



70%

DESIGN FLEXIBILITY

Modular fabrication components accommodate various housing types while maintaining up to 70% consistency in quality and appearance, creating attractive and functional homes that meet diverse community needs.

IMPROVED QUALITY CONTROL

Modular fabrication components are built in a controlled environment, resulting in fewer construction defects and up to 70% fewer callbacks, ensuring affordable housing safe and durable.

WORKFORCE ENGAGEMENT

Modular fabrication projects create opportunities for workforce engagement and training, including apprenticeships and on-the-job learning for disadvantaged young people, supporting the growth of the local workforce.

50%

IMPROVED THERMAL PERFORMANCE

Modular fabrication components provide superior thermal performance, ensuring housing that is comfortable and energy-efficient, reducing heating and cooling costs by up to 50% and achieving an 8-star energy efficiency rating.

REDUCED WASTE

Modular fabrication significantly reduces waste compared to traditional construction methods, with waste reduction of up to 50%, making it a more sustainable and cost-effective option for large affordable housing projects.

FASTER CONSTRUCTION TIMES

Modular fabrication reduces construction times by up to 50%, making it ideal for addressing urgent housing needs.

30%

FASTER RETURN ON INVESTMENT

Modular fabrication can help investors achieve a return on investment up to 30% faster than traditional construction methods, allowing for quicker capitalization on affordable housing projects.

SUSTAINABILITY

Modular fabrication reduces a building's carbon footprint by up to 30%, making it an environmentally friendly choice for all housing types.

25^{YRS}

LONGER LIFECYCLE

Modular fabrication results in buildings that are more durable and require less maintenance, leading to a longer lifecycle of up to 25-30 years, resulting in long-term cost savings and reduced need for costly repairs or renovations.

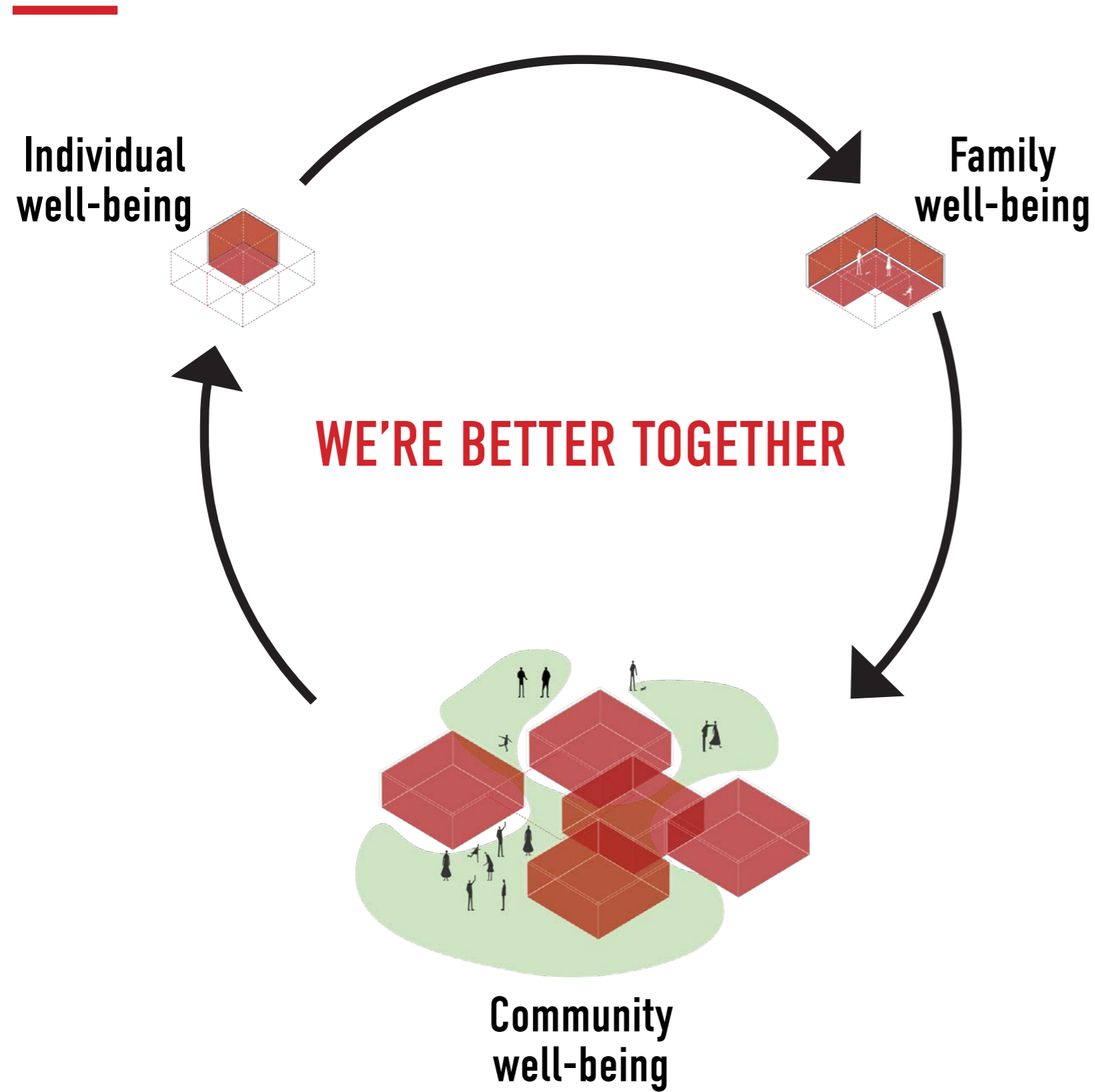
20%

COST-EFFECTIVE

Modular fabrication leads to cost savings of up to 20% in material and labor costs, making it an affordable solution for social and affordable housing projects.



VISION



ModHOMES PROGRAM
WINNER
Tasmania
2023



FUTURE HOMES COMPETITION
WINNER
Melbourne
2021

Delivering social and environmental outcomes

We aim to improve built environments with modular design, prefabrication, and the use of timber as source of environmental building material. Sustainable architecture that positively impacts communities.



ADAPT TO CHANGE

- | Homes with adaptable spaces that can accommodate changes in people's lifestyles, such as the need to age in place and work from home.

TAKE TIME OUT

- | Spaces to take time out, courtyards, communal open areas, and private balconies, provides residents with opportunities to relax, recharge and rejuvenate.

INDIVIDUAL WELL-BEING



CONNECT WITH THE COMMUNITY

- | We encourage social interaction with the surrounding community through the use of communal green areas, and incorporating productive gardens. This is essential to create a sense of belonging.



LIFE - CYCLE VALUE

- | A home should offer life-cycle value by providing fit-for-purpose spaces, allowing for future upsize or downsize, like including dual key dwellings for additional income opportunities.

SOCIAL CONNECTION

- | Homes that incorporate intentional neighbouring crossing paths and shared vegetable gardens can foster a sense of community and promote physical and mental well-being.

FAMILY WELL-BEING



SINGLE - PARENT & COUPLE - PARENT FAMILIES

- | For single-parent families, affordable and manageable spaces are key. For families with no dependents, flexibility in design is important.
- | For couple-parent families with no dependents, adaptable and versatile spaces can cater to changing lifestyle needs.



COMMUNITY WELL-BEING



HELP OTHERS

- | We provide communal facilities that everybody can enjoy to relax, socialise and create the sense of structured community.

WELCOMING ENVIRONMENT

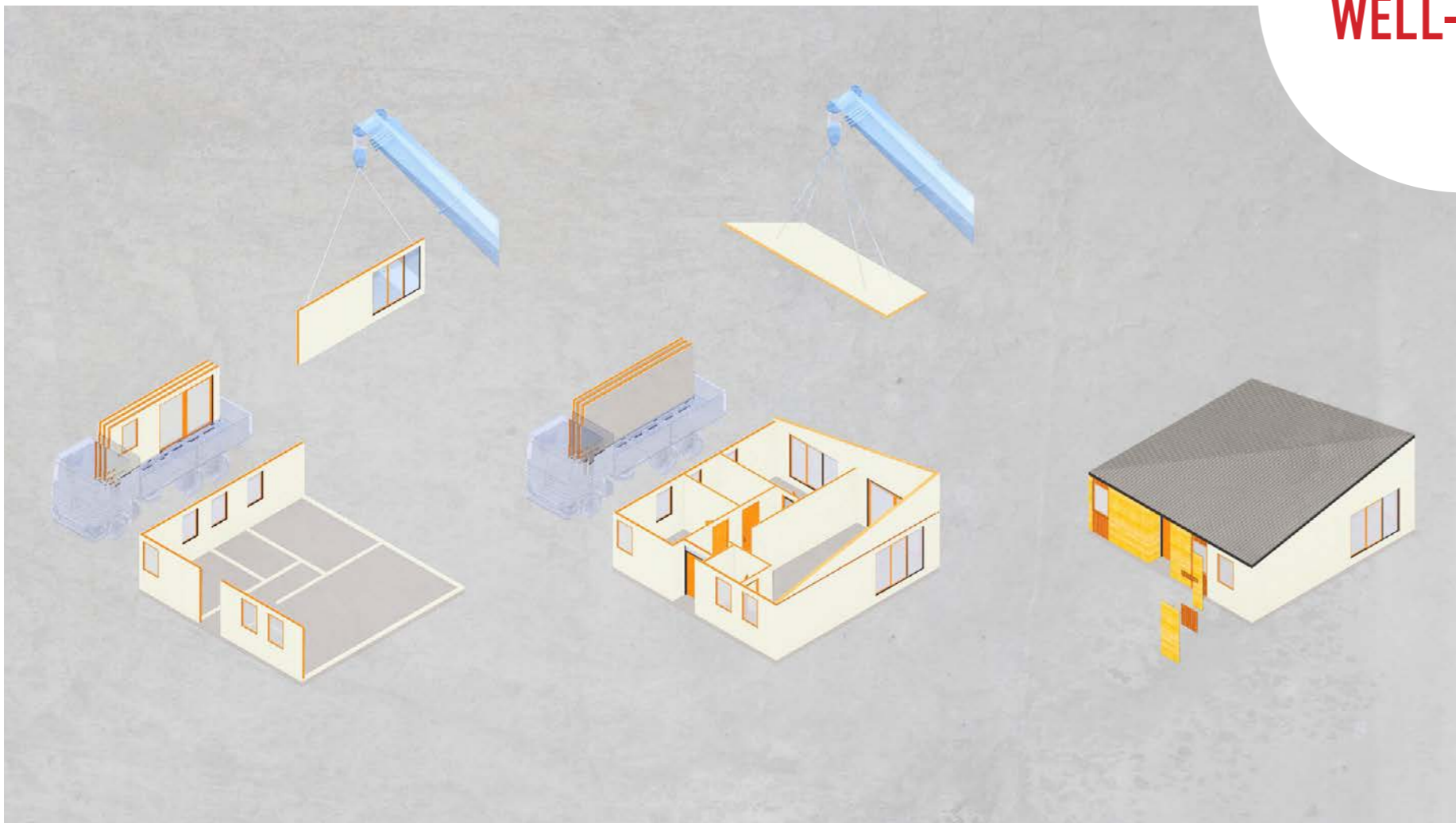
- | Incorporating mixed communities, with a variety of dwelling densities, age-in-place features, and mixed incomes can promote intergenerational relationships.

PROMOTING COLLABORATION

- | Providing pre-fab opportunities can offer affordable and sustainable housing solutions while also fostering community involvement and cooperation.



PROJECT WELL-BEING



NET ZERO EMISSIONS

- | Net zero emission houses are a smart investment. They provide significant economic benefits, like lower energy costs, increased property value, and access to government incentives.

RETURN ON INVESTMENT

- | Pre-fabricated buildings have increased efficiencies and save costs. They have shorter time-frames (faster to build) and require less workers on-site. They also offer training opportunities.

ENVIRONMENTAL FRIENDLY

- | Housing design that addresses the heat island effect, allows for energy-efficient technologies, reduces energy costs and incorporates passive design features.



FUTURE HOUSING SOLUTIONS

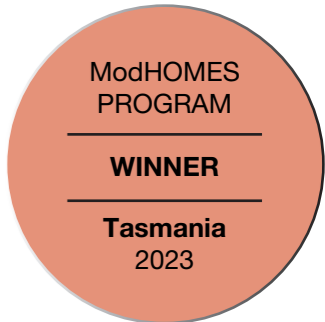
SMALL FAMILY HOMES



POTENTIAL RESIDENTS

- | Single-Parent families - without dependants
- | Single-Parent families - one dependant under 5 years old

36 m²



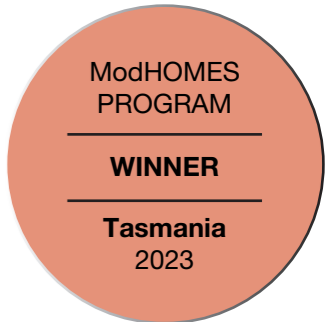
SMALL FAMILY HOMES



POTENTIAL RESIDENTS

- | Single-Parent families - without dependants
- | Single-Parent families - one dependant under 5 years old
- | Couple families - without dependants

55 m²



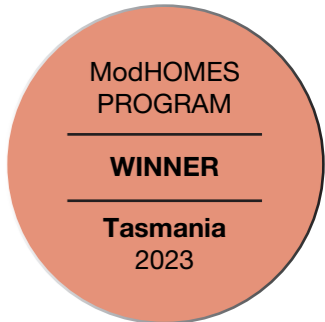
MEDIUM FAMILY HOMES



POTENTIAL RESIDENTS

- | Single -Parent families - one dependant over 5 years old
- | Couple families - one dependant under 5 years old
- | Couple families - one dependant over 5 years old
- | Couple families - two dependants under 5 years old

75 m²



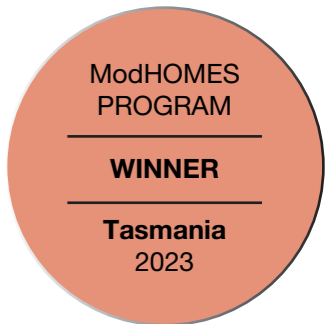
MEDIUM FAMILY HOMES



POTENTIAL RESIDENTS

- | Single - Parent families - two dependants over 5 years old
- | Couple families - up to four dependants under 5 years old
- | Couple families - up to two dependants over 5 years old

104 m²



MEDIUM FAMILY HOMES | Missing middle

- » Built to rent
- » Rent to buy




POTENTIAL RESIDENTS

- | Single - Parent families - two dependants over 5 years old
- | Couple families - up to four dependants under 5 years old
- | Couple families - up to two dependants over 5 years old

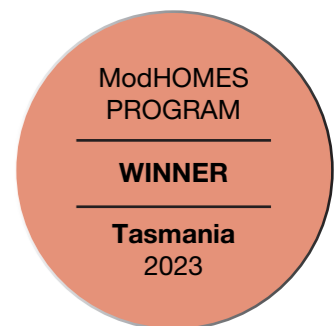
105 m²  

DUAL KEY OPPORTUNITIES

UNIT A 55 m²  

UNIT B 50 m²  

- » Income generator
- » Granny flat
- » Family addition
- » Home office
- » In-house caregiver
- » Guest suite



MEDIUM FAMILY HOMES | Missing middle

- » Built to rent
- » Rent to buy



POTENTIAL RESIDENTS

- | Single-Parent families - two dependants over 5 years old
- | Couple families - up to four dependants under 5 years old
- | Couple families - up to two dependants over 5 years old

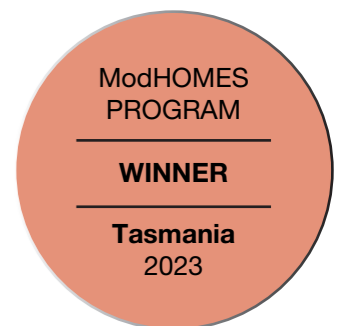
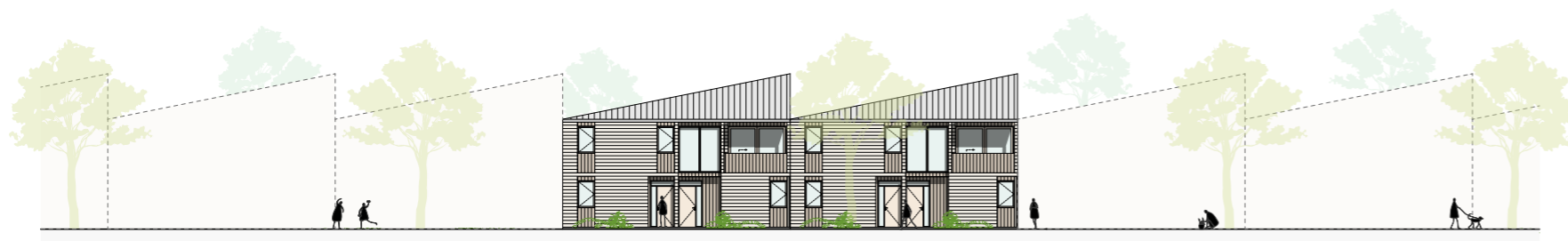
UNIT A

100 m²



UNIT B

100 m²



MULTIGENERATION FAMILY HOME



FIVE
BEDDER

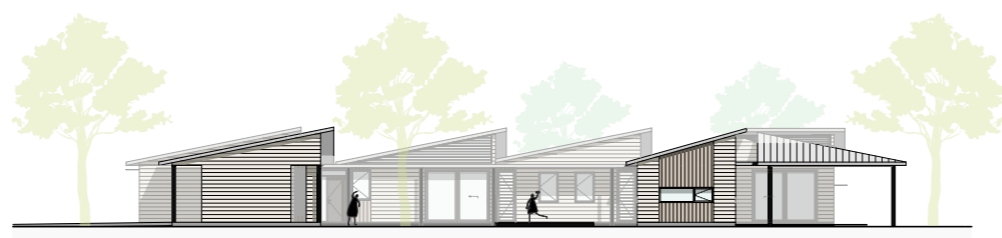
POTENTIAL RESIDENTS

- | Age in place homes
- | Aboriginal Communities

195 m²

5

2.5



ModHOMES
PROGRAM
WINNER
Tasmania
2023

APARTMENT HOMES



THREE STOREY

LOW DENSITY

1,182 m²



MEDIUM DENSITY

1,708 m²



MEDIUM DENSITY + BASEMENT

2,440 m²



FUTURE HOMES
COMPETITION
WINNER
Melbourne
2021





LET'S BUILD GREAT COMMUNITIES

FUTURE HOMES
COMPETITION

WINNER

Melbourne
2021

ModHOMES
PROGRAM

WINNER

Tasmania
2023